

RJ POWER GROUP

The High Voltage Network Provider

POWER WORLD

COMPANY UPDATE

Networks Division

See page 7

NEW BEGINNINGS

Rail Division's Projects in Focus

See pages 8 and 9

ALL IN A DAYS WORK

RJ Power Group in the Community

See page 16

WELCOME

I'm delighted to welcome you to this latest edition of Power World. A lot has happened since our last newsletter, as the business has continued to perform strongly six months into our re-brand, with a number of new developments having taken place.

Our Rail division has experienced unprecedented growth and, with so much to tell, will be our main focus for this latest edition.

An award for our processes start things off, with our rail business achieving five stars in respect of its recent RISQS audit, demonstrating our continual investment in both safety and compliance. Great work and thanks to all areas of our business, but in particular to our HSQE team.

Other highlights include a new partnership with Amey-Inabensa, delivering High Voltage works as part of Network Rail's National Electrification Programme. Works are already moving forward apace on the Gospel Oak to Barking Line electrification, which includes a phased eight-month programme of activities that will provide new infrastructure to power four-car electric trains, meeting growing demand on that route.

Hot on the back of our award-winning success with Volker Fitzpatrick at Three Bridges, the rail business has continued its successful collaboration securing power works on the prestigious Crossrail project as part of the enlargement of a train depot at Ilford Yard in London.

Many congratulations to Matt Woolley and the entire sales and estimating teams.

Not to be out-done by our many new work successes, the delivery teams have been working diligently, completing HV and DC works for our many rail clients throughout the south.

This includes the completion of works at Dover Sea Wall, which arose on Christmas Eve 2015 when the sea wall and 250 metres of track between Dover Priory and Folkestone Central collapsed. Our works on behalf of BCM Construction Limited – Network Rail's HV Feeder Framework Contractor – assisted with the supply, management, possession management, site works, installation, testing and commissioning of new high voltage feeder and pilot cables. The scheme delivered on behalf of Network Rail IP was completed three months early. This is one example of many successes and is testament to Operations Manager Owen Marsh and his delivery teams for all their high quality work.

On the subject of quality, I mentioned last time that we were working towards various accreditations. I am pleased to announce that the business has achieved its ISO 9001 certification and in addition has also been certificated for its safety processes with the award of ISO 18001. These awards demonstrate our commitment to continuous improvement across all areas of our business.

With growth comes recruitment and our Business Development Director – Mike Wakeford and Operations Manager Owen Marsh – are already making their presence felt, and have been busy recruiting some high quality personnel into the business; and we anticipate a further surge in appointments within this already booming area of our business. The additions include our new Level A Test and Commissioning Manager, Simon White, Project Manager, Ian Scull, Senior Construction Manager, Andy Gore, Office Manager & HR Assistant, Janette Crisswell and Resource Planner, Suzanne Goss; you are all most welcome.

Finally, and not to be outdone by our rail business, the private networks team have been flat out too. Settling into their new premises in Kent, the team has been busy tendering for works and with some important new successes – I look forward to focusing on more of their successes next time round.

Thank you for your continued interest in the RJ Power Group.



Glenn Rowatt,
Managing Director



RJ POWER RAIL

COMPANY UPDATE

We highlighted in the last edition that the rail business was looking to target the National Electrification Framework for future opportunities. We are delighted to announce that our hard work is paying off and that we are in partnership with Amey-Inabensa in the south, working with them on the Gospel Oak to Barking Project – more on that one later.

Building off the back of a number of long term and successful collaborations with Volker Fitzpatrick, we have commenced works as part of a £50m scheme at Ilford Depot, which forms part of Crossrail, one of the largest infrastructure projects in Europe. Works completion for this contract is planned for Spring 2017 and is one of our “Projects In Focus” on Page 9.

Our delivery team has in fact been flat out across all electrical disciplines and we have just commissioned and handed back into service complex and time critical HV engineering works, as part of the Dover Sea Wall Project with time to spare – you can read more about this fantastic achievement on Page 10.

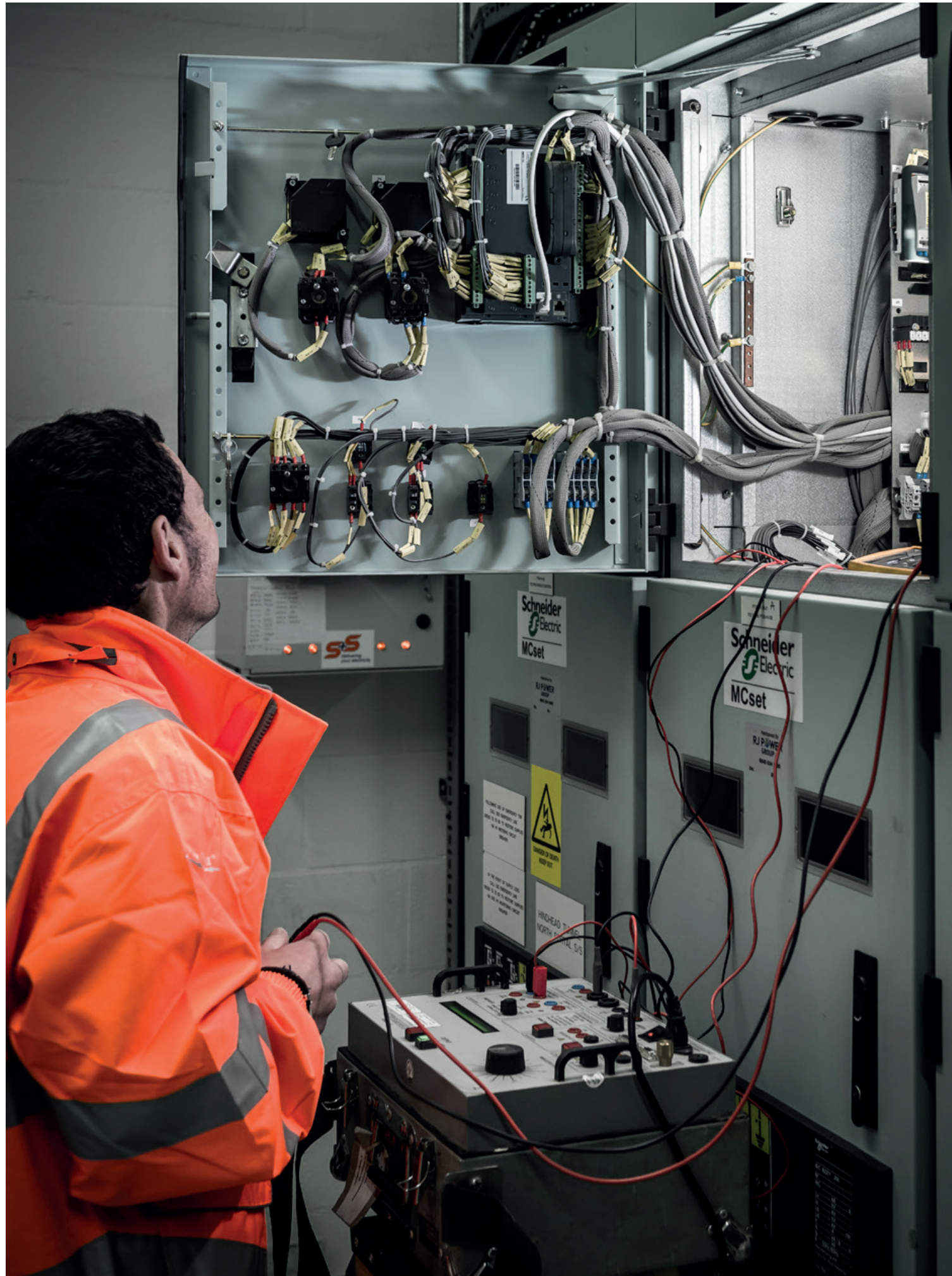
One of our long-term schemes is Thameslink, in which RJ Power Group has been the preferred contractor and involved in a number of power upgrades involving DC cabling and S&C renewals as part of the £6.5 billion government sponsored upgrade of services, helping to transform north-south travel in London. The latest phase at London Bridge Station was completed during August Bank Holiday, which opened the new station concourse and provided full passenger access to both operational escalators and lifts.

We have also been busy completing works within our ETE department on behalf of both Keltbray Rail and Walker Construction.

Our new rail management team has been busy shaping the business, working to enhance our project delivery further, and we are delighted to have recruited some rail industry specialists to underpin our plans – we focus on these new recruits a bit later in this edition.

As one of the fastest growing rail electrification specialists in the south, we continue to place high focus on developing the large volume of work directly from Network Rail’s delivery teams. In reward for our consistent performance and the high regard for our works delivery, we are delighted to announce that Network Rail has agreed to sponsor us for their Principal Contractors Licence scheme. We look forward to updating you on our progress in the months ahead.





RJ POWER NETWORKS

COMPANY UPDATE

Six months in and we are now fully operational from our new premises just off Junction 4 of the M25. We are now positioned perfectly for reacting to our customers' demands and with many of our contracts incorporating emergency cover, this location enables us move in and out of London, where the majority of our clients operate.

Having a strong brand and a clear identity has enabled us to dedicate more time to our business development efforts, which has made a tremendous difference to establishing RJ Power Networks as a brand, and a viable option for customers that operate and maintain private networks.

As of this sales push, our estimating team has been feverishly bidding for works across a number of sectors and we have now submitted hundreds of tenders.

Targeting certain customers has resulted in a number of key successes, including a framework agreement for a facilities management company with a large portfolio of buildings within the UK. We now are their preferred contractor for HV and LV maintenance, emergency callout and asset replacement.

Another fantastic success has been securing a contract with a major multiple-site end user. This will provide regular work for the HV and LV maintenance teams. The client – one of the largest property owners in the UK – currently, provides us with at least two sites to maintain each week.

We continue to target areas of known stability within the facilities management and HV end user markets, with our prime target area being London and the South East.

Cross pollination of staff is also working well, with resources being used across the both Rail and Networks businesses to connect and combine skills across the group, essential for innovation and a key part of remaining competitive.

With all this activity, we are also currently recruiting in both estimating and accounts and we look forward to announcing some key appointments next time.

NEW BEGINNINGS

PROJECTS IN FOCUS

RJ Power Group in Partnership on Gospel Oak to Barking

RJ Power Group is delighted to announce its latest collaboration with Amey-Inabensa – the 50/50 joint venture – delivering Network Rail's southern region electrification ambitions as part of the wider £2 billion National Electrification Programme.

The five-year framework will deliver around £200m worth of electrification work, extending over 250km of track covering routes from Basingstoke to Southampton and Basingstoke to Reading. This will lead to reduced journey times, more reliable train services and an increased capacity across the UK rail network.

Our first package of work for them covers the route between Gospel Oak and Barking. The project, which involves re-modelling the existing railway to double capacity, will transform a Victorian railway to electrified power. This is a complex undertaking, and involves extensive re-modelling of track and bridges to unlock vital space needed for new electrical infrastructure. With over 600 new structures to be installed across the route to support overhead power cables, space will be created, by lowering four sections of track and removing and replacing four bridge structures.

The electrification system adopted will be 25 kV a.c. classic boosterless. As part of this electrification project, three new distribution sites will be installed along the route at Gospel Oak, South Tottenham and Barking West.

Our works includes the full electromechanical scope, incorporating the installation of 25kv cabling & terminations, busbar and jumper installations, earth connections and bonding, DNO power supplies, control wiring and connections, RTU installation and interconnection works from the AEE building to the SMOS pallets.

RJ Power Group will also provide pre-commissioning duties including SAT for SMOS & AEE, LV tests, HV mega tests, switchgear test, IED tests and primary injections.

The intention is to pre-commission any electrical assets within the substation and all associated cables during a phased eight-month closure of the railway between June 2016 and February 2017.

Crossrail – Ilford Depot

Building on its award winning partnership with Volker Fitzpatrick from Three Bridges Depot, RJ Power Group has secured a significant contract for signalling and power supplies (Stages 3-7) at Ilford Depot. This project forms part of Crossrail, one of the largest of its kind in Europe. RJ Power Group's collaboration with Volker Fitzpatrick will see the creation of ten new sidings and a new building for train drivers and other rail staff.

Enabling works commenced in July as the team began work with Volker Fitzpatrick to complete electrical enabling works in preparation for the main improvement works. These included:

- the installation of temporary LV supplies to depot support buildings, including the yard controller's office and mess rooms;

- cable pulling, installation, termination and testing;
- and final testing and commissioning of portacabin supplies.

The main works have now commenced with RJ Power Group supplying and installing a 500kva substation and a 2MVA substation, including connecting the services from both substations to the distribution cubicles, the points heating cubicles, the PSP and two separate buildings to create power within the new sidings.

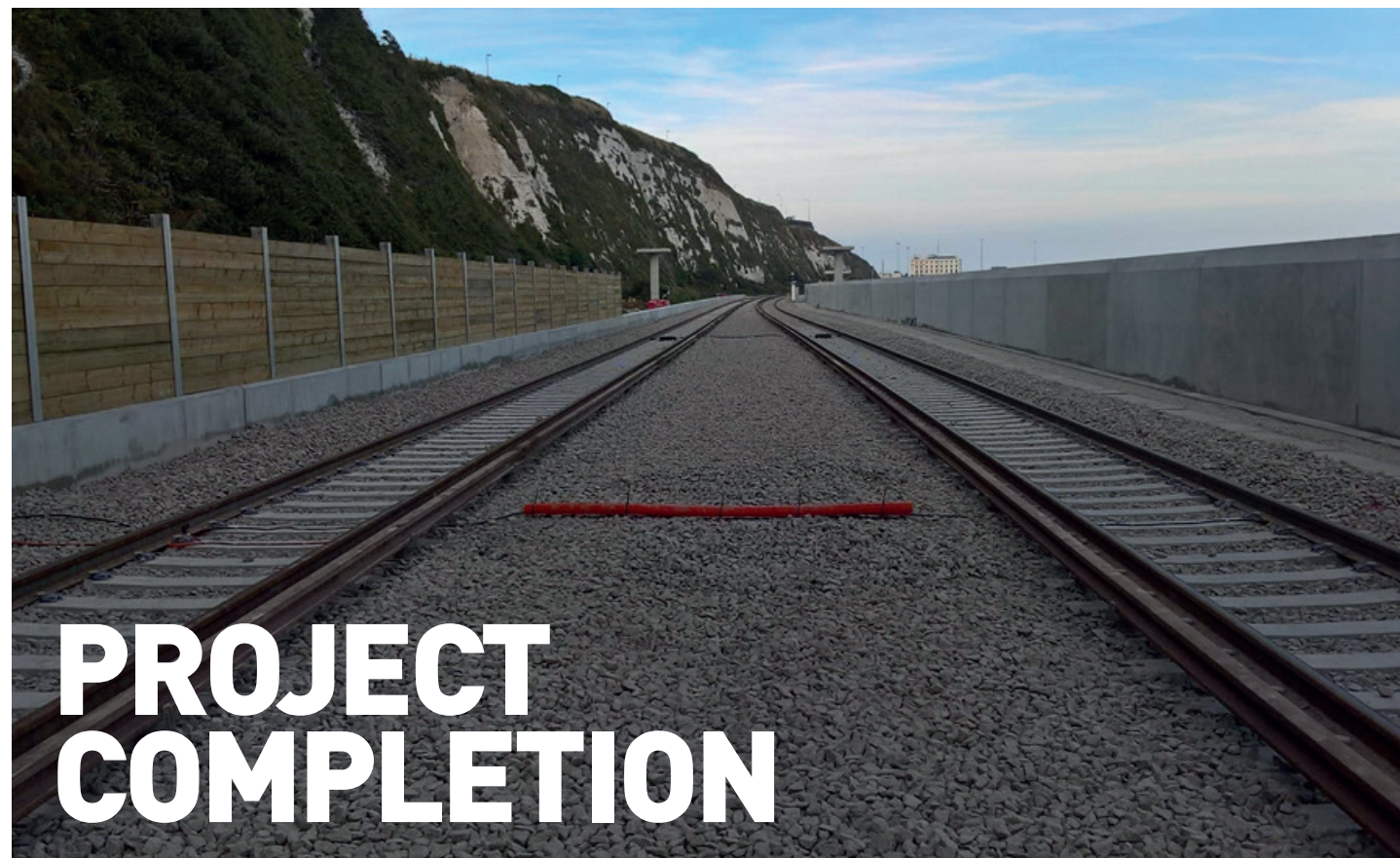
The scope will also involve a new LV switchboard to support small power and lighting and an interface to supply cabling to the RMU's (UKPN Assets) and the provision of all earthing arrangements.

RJ Power Group is also providing the new power signalling supplies, including the supply and installation of FSPs and feeder cabling from the PSP.

Works are proceeding tremendously and as a result, the rail team has been awarded a number of additional works including providing power supplies to temporary building, temporary walkway lighting and a points heating package once the new permanent way has been installed.

RJ Power Group's involvement in a project of this size and importance speaks volumes about the Rail Division's credentials. It is this experienced power engineering know-how that will help prepare Ilford Depot for completion, delivering one of the biggest yards on the project, one which will be crucial to the smooth running of future Crossrail services.





PROJECT COMPLETION

Dover Sea Wall

RJ Power Group has completed its part in the Dover sea wall project, which arose on Christmas Eve 2015 when the sea wall and 250 metres of track between Dover Priory and Folkestone Central collapsed. This gave rise to major multi-disciplinary works to the Dover-to-Folkestone lines, which were completed in nine months – three months ahead of schedule.

The Rail Division was contracted by BCM – Network Rail's HV Feeder Framework Contractor – to assist with the supply, management, site works, installation, testing and commissioning of new high voltage feeders and pilot cables.

As part of the works, RJ Power Group replaced the existing oil-filled cables with new 33KV cabling, renewing pilot cables and installing optical fibre telecommunication cables, which included draining any

redundant oil and recovering and safely disposing of old cables.

The rail engineering team began the following works in April 2016, successfully testing and commissioning back into service on 4th September:

- Replacement of the existing 48 core pilot cable with two 30-pair joints at each end of the insertion.
- Refurbishment and installation of 2No oil tanks including new oil leads and the recalibration of the associated Low Oil Pressure Indicator (LOPI) switch, installation of a hot-splice joint, conducted sheath testing on the HV cables before jointing to hot-splice, finally completing the pressure testing of F1033 after completion of the hot-splice.
- Completion of final testing and

commissioning of the HV F1033, successfully bringing it back into service

- Completion of ETE works, section proving and commissioning of the DC back into service

All works were completed by the first week in September, with no incidents or accidents reported. The project has been the subject of great media and political focus, and the Rail Division of the Group is proud to have played its part in restoring the railway to service well ahead of schedule.



ENGINEERING IN FOCUS

RJ Power Group's amplifies its Rail Engineering Team



The appointment of Simon White as RJ Power Group Ltd's new Rail Testing and Commissioning Manager is set to consolidate the company's growth and success over recent months.

The specialist power business, since restructuring and re-branding earlier this year, has been enjoying an intensive period of activity and this appointment is one of a number of new senior recruitments.

In line with RJ Power Group's commercial objectives, Simon's main focus will be to develop the testing and commissioning department to match the projected growth of the company.

Simon, who is a firm believer in educating and developing others, is also a seasoned teacher and is a highly motivated, passionate and caring individual, who also continuously strives for his own self-improvement. He has worked for 19 years in the electrical and power industries, 14 of those in the rail sector. This has provided him with a broad range of engineering experience across a variety of infrastructure projects – experience, which will hold him in good stead for developing further.

With a natural problem-solving ability, Simon has worked his way up the engineering ranks in a variety of roles ranging from Electrical Installation Engineer, to a full Level A Test & Commissioning Engineer – a qualification he has held since 2006.

Simon has achieved a variety of City & Guilds qualifications, such as 2360 parts 1 & 2, 2391 and 2400, and is about to put his passion for leaning into a HNC in Electrical & Electronic Engineering. Vocationally, he has extensive experience and training in LV (NICEIC) testing, Earth testing, HV pressure testing, fault finding, testing of various protection relays, testing of HV, DC switchgear, rectifiers and transformers and has led and assisted in the testing and commissioning of a number of Network Rail 33kV substations.

Bringing a unique set of skills and experience to his managerial role Simon is already proving a great asset to the Rail Engineering Team.

PROJECT COMMENDATION

Bam Nuttall – Thorndell Viaduct

RJ Power Group's rail division has received high praise having successfully completed its HV Diversionary works in Pulborough, West Sussex – part of Network Rail's Southern region infrastructure.

Having completed its first project for BAM at Thorndell Viaduct twelve months earlier, RJ Power Group was awarded its second HV diversion project, which formed part of a major deck replacement on the River Arun Bridge.

This second bridge replacement project differed from the first by virtue of the requirement for renovations to be completed whilst the bridge was in use.

The project had two key milestones to meet in order to complete the full bridge deck replacement. RJ Power Group played a key role in helping BAM Nuttall achieve these.

RJ Power Group provided BAM with HV competent staff during both key stages of the Bridge Deck

Replacement works. The team also diverted the existing HV feeder 3316 and its associated 56 core pilot cables – having previously surveyed the site and delivered and installed the new 185mm HV cables – along with new 30 pair pilot cables and oil lead prior to the final commissioning works taking place.

This approach enabled R J Power Group to accelerate its works and ensure that there would be sufficient time and float in the programme to concentrate on the actual slewing of the HV feeder 3316 and its associated pilots.

RJ Power Group's weekend possession works were a huge success. Its specialists achieved the installation of two new hot splicers, the installation of a newly jointed slow pilot cable and also jointed the existing 56 core fast pilot to the new 30 pair pilot cable. They then finally positioned the newly jointed HV cables from the scaffold decking into the newly installed GRP route.

RJ Power Group and BAM Nuttall's site management worked diligently alongside each other throughout this project and successfully planned and delivered all key stages without accidents or incidents, completing the works ahead of programme.

Commending RJ Power Group on its works, BAM Nuttall's Operations Manager Gareth White said:

'I'd like to thank you all and your colleagues for the great work undertaken last week at Arun River to make this project a success. There were no accidents or incidents during the weekend and thanks to your efforts we were ahead of programme throughout the possession. The job was a big success and I have attached a few feedback emails from Network Rail thanking the whole team...'



RJ POWER GROUP

WELCOMES NEW STAFF

Ian Scull,
Project Manager



Ian is a vastly experienced and competent manager with a proven project management background for delivery of rail engineering projects.

He is a highly motivated, passionate and loyal individual with an exceptional eye for detail, who continuously strives for self-enhancement and the improvement of others working alongside him.

He works on concurrent projects, delivering works from project inception through to completion and his skills include competence in Microsoft Office applications, Primavera scheduling and reporting tools, and also EVMS.

Welcoming Janette and Suzie

Janette Cresswell has also joined the Rail business, as Office Manager and HR Assistant. She is responsible for the facilities at the Group's HQ in Horsham and has previous experience working for a railway electrification company, having spent 4 years with HVMS.

Suzie Goss has also been recruited to support rail delivery in the capacity of Resource Planner. Her main focus is to ensure that projects are appropriately staffed, however Suzie will also provide administrative project support.

In his role as a Project Manager, he will be leading, planning, managing and delivering projects to time, within budget and to specification.

He will also be responsible for building and maintaining project teams to facilitate successful project delivery

Ian's goal, as part of his career enhancement, will also develop and maintain mutually beneficial relationships with clients and sponsors to enable business growth.

Andy has vast experience in setting the standards of behaviour and responsibility for projects, as RJ Power Group looks to continue to set the standard in terms of high quality project delivery.

On a day-to-day basis, Andy will be responsible for implementing the requirements of the construction phase plan on site, assisting in the development and approval of core project documentation and fully co-ordinating all project activities, whilst liaising with other project stakeholders to minimise risks that could jeopardise the successful delivery of the project.

His 17 years of experience in the rail industry have provided him opportunities to work on major schemes throughout England, Wales and Scotland, projects that have included Civil Engineering, Signalling Installations, HV Feeder and DC Cable works.

He has worked his way up the career ladder, from a PTS site worker, through to a COSS, a Ganger, a Site Supervisor, moving into Site Management and now, Construction Management. He has continued his education during that time and has gained certification as a SSSTS/SMSTS, a Level C Tester, an HV Assessor, an SSoWP Responsible Manager and is also a Full First Aider.

Andy is also keen to pass on his vast engineering delivery experience and regularly spends time mentoring less experienced staff, conveying his rail industry know-how to enhance, educate and develop others.

Having achieved his BTEC National Diploma in Business and Finance, Andy looks forward to being immersed in RJ Power Group's forward-thinking mentality, to broaden his knowledge further and enhance his skills – to the ultimate benefit of RJ Power Group.

Andy Gore,
Senior Construction Manager



RJ POWER GROUP IN THE COMMUNITY - ALL IN A DAY'S WORK

Seven staff members from RJ Power Group – the High Voltage Power Contractor – recently gave up their working day to volunteer at Chestnut Tree House in Arundel, West Sussex.

Chestnut Tree House is a children's hospice, which provides invaluable respite for families with a child who will not make it to adulthood due to terminal illness. 300 children aged from 0 to 19 can stay for two weeks a year, safe in the knowledge that there are nurses on hand around the clock. The charity also offers care for families towards the end of their child's life, letting them spend as much quality time as possible at the most heart-breaking time of all.

Voluntary labouring days save the charity over £17,000 every year, which is hugely helpful in keeping down the costs of its vital services.

Owen M, Owen S, Michael, Suzanne, Laraine, Darren and Helen from RJ Power Group rolled up their sleeves in the beautiful grounds and got to work weeding, digging, trimming, sweeping and tidying in some of the hottest conditions of the year. They were based primarily in the memorial garden but also helped to clear pathways in the woodland area for the ease of people with wheelchairs and pushchairs.

This is part of RJ Power Group's corporate social responsibility commitments, by giving something back to the communities that they serve.



ACCREDITATIONS

RJ Power Group is delighted to announce its international accreditation to the ISO9001 standard in respect of Quality and the ISO18001 standard in regards to Health and Safety.

The company has always operated its processes and procedures in accordance with these standards; however, gaining official certification was a business objective for 2016.

Not resting on its laurels, the business is now working towards its systems being accredited to the environmental standard (14001) and is expecting to announce further details later this year.

The HSQE team has had a busy time of things, receiving confirmation that the company has successfully passed its Safe Contractor assessment.

The specialist electrical contractor is now proud to be accredited with:

- Safe Contractor
- Construction Line and;
- ROSPA

The Rail business has also passed its RISQS Audit with 5 stars - the highest accreditation level any rail business can receive and clearly demonstrates our ability and commitment to consistently provide products and services that meet and exceed the needs of their customers and other relevant stakeholders.

These accreditations underline the highly compliant systems operated by RJ Power Group and underpin the processes and procedures, which allow the company to continue to build for the future.



SAFETY

'Act safe, be safe, think safe' is inherent in our business culture. We have zero tolerance policy to safety.



QUALITY

We believe in delivering a high quality service, one that we are all proud of.



RESPECT

We have respect for our team, our partners and the areas in which we operate.



RELIABILITY

We believe in delivering on time and to budget without compromise.

RJ POWER GROUP

The High Voltage Network Provider

Unit 15, Lawson Hunt Industrial Park, Guildford Road,
Broadbridge Heath, Horsham, West Sussex, RH12 3JR.

Tel: 0345 034 1480 Email: info@rjpowergroup.co.uk

www.rjpowergroup.co.uk

